

## M3510A/M3511A Firmware Upgrade Instructions

### 1. Requirement:

You need to download the NI-VISA 3.6 Driver or the latest version for your OS Windows XP or 2000. If your OS is Windows Vista, please download the NI-VISA 4.1 or the latest version.

### 2. Instructions:

- a. Decompress the M3510\_FirmwareRev.zip or the M3511\_FirmwareRev.zip. The files \*.pak and DMM\_update.exe will appear as shown in the Figure-1.



Figure- 1

\*.pak: Refer to the firmware update component.

DMM\_update.exe : Refer to the executive program.

- b. Please connect the DMM with your PC by the USB cord. When the PC detects the M3510A or M3511A, execute the program DMM\_update.exe. The DMM update window will pop out as shown in the Figure-2. Then press "Select" button and find the file you want to update as shown in the Figure-3.

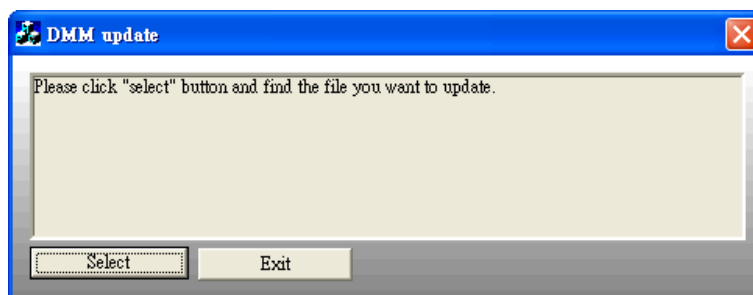


Figure- 2

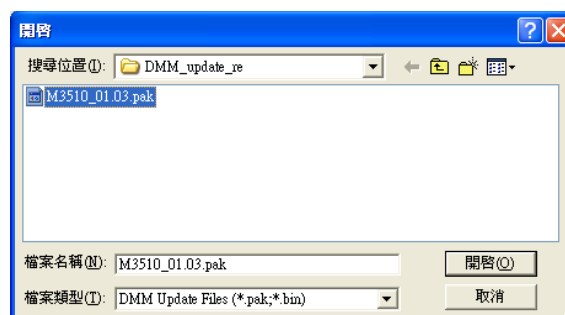


Figure- 3

- c. While the file is executed, the program will diagnose DMM's PID (Product Name), VID (Manufacturer Name) and Firmware version. If the version is out-of-date, update tips will lead you to do the next step as shown in the Figure-4.

When everything is ready, press "Yes" to upgrade the firmware, and the DMM's display will show "UPDATE MODE". Conversely, if the PID and VID don't match the system requirement as shown in the Figure-5 or the system version of your DMM is more advanced than the file you select as shown in the Figure-6, the upgrade procedures will be stopped, and the system will ask you to exit.

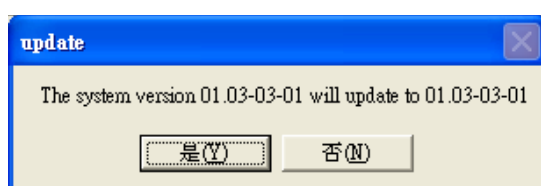


Figure-4



Figure-5

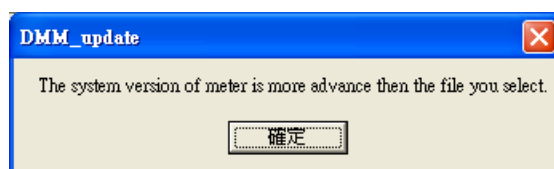


Figure-6

- d. When the DMM update is finished, restart your DMM and select EXIT to close the DMM update window as shown in the Figure-7. Conversely, if the updating is not successful as shown in the Figure-8, click the "Select" button to repeat the upgrade procedures.

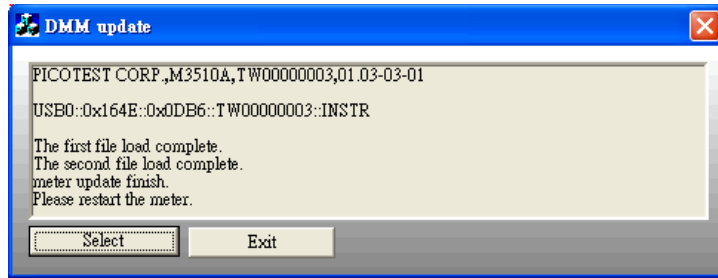


Figure-7

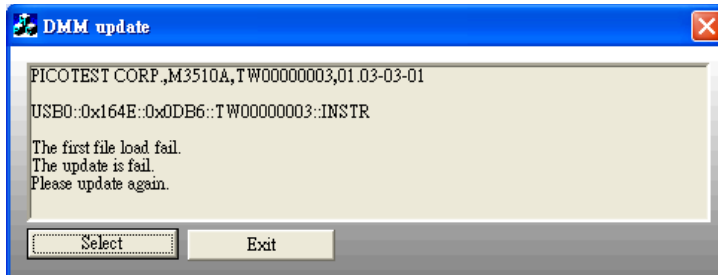


Figure-8

### 3. Notes

- a. If your PC can't detect the DMM, "Can not find USBTMC device" message will pop out as shown in the Figure-9. Follow the direction as shown in the Figure-10 to exit the program. Then make sure whether your PC connects to the DMM properly.

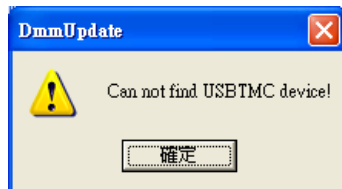


Figure-9

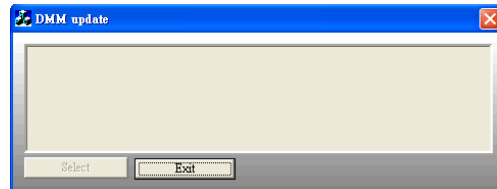


Figure-10

- b. If the DMM shows UPDATE MODE after successful upgrade, please re-power the DMM for your application purpose, and click "No" to exit the program. However, if your DMM's firmware update is unsuccessful, please follow the message as shown in the Figure-11, and click "YES" for the next step.



Figure-11

- c. The message "There is still an "Update Mode" message. Do you want to update the firmware?" as shown in the Figure-12 will pop out to remind you. Please click "Yes" to continue.



Figure-12