

DSP F/W VER. 01.0H & Front-END MCU F/W VER. 04 Installation

Please complete the steps below and install both file 1 and file 2 to upgrade the Version of M3500A.

DSP F/W VER. 01.0H

File 1. [DATA_X1_10H..bin](#)

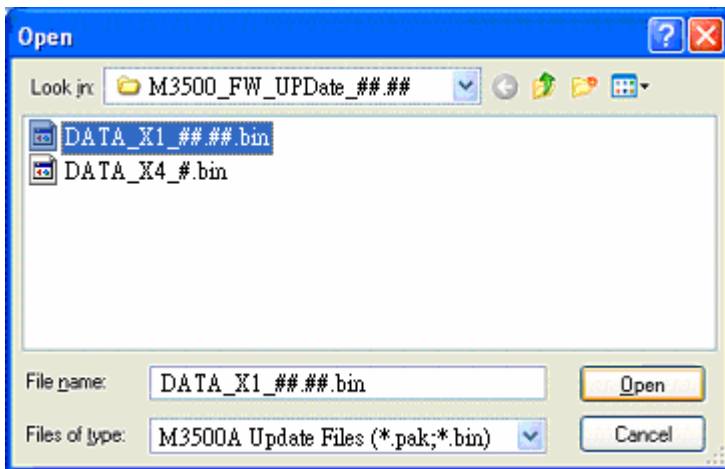
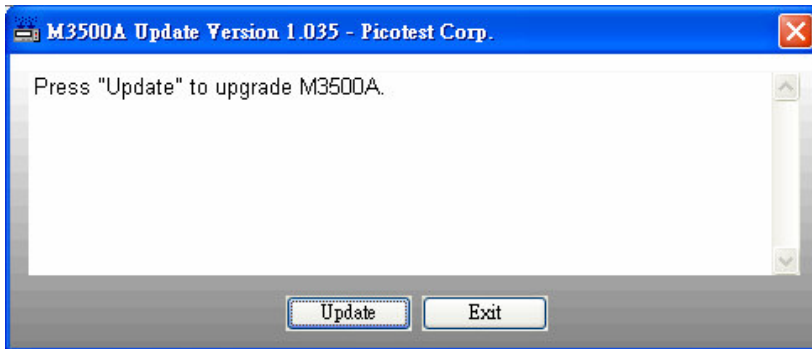
File 2. [DATA_X4_4.bin](#)

Notice: ##.## means 01.0H,

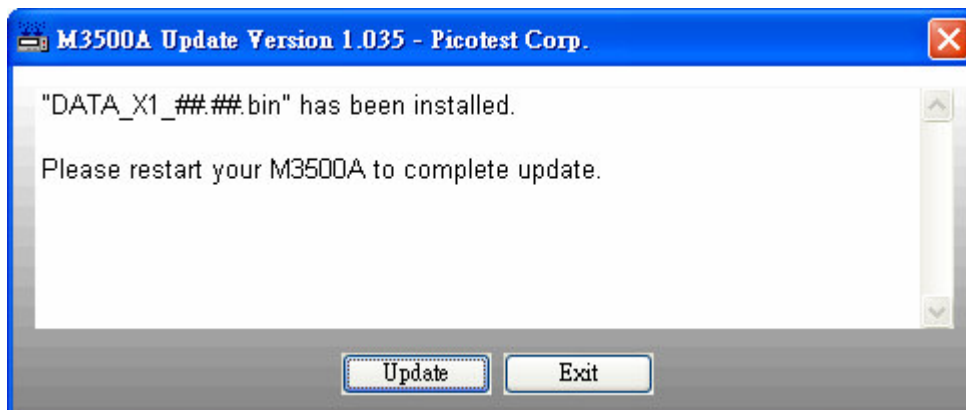
DATA_X4_#.bin means DATA_X4_4.bin

Step1. Connect M3500A to PC via USB cable.

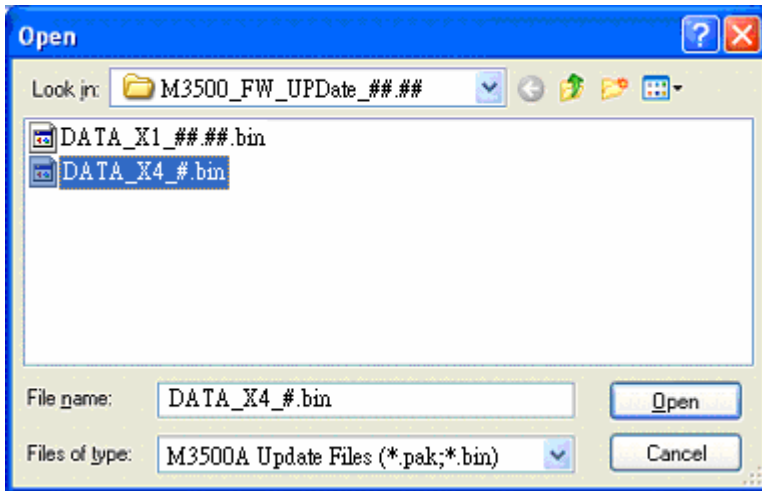
Step2. Execute [DmmUpdate.exe](#) and click “Update” to choose the file [DATA_X1_01.0H.bin](#) for installation.



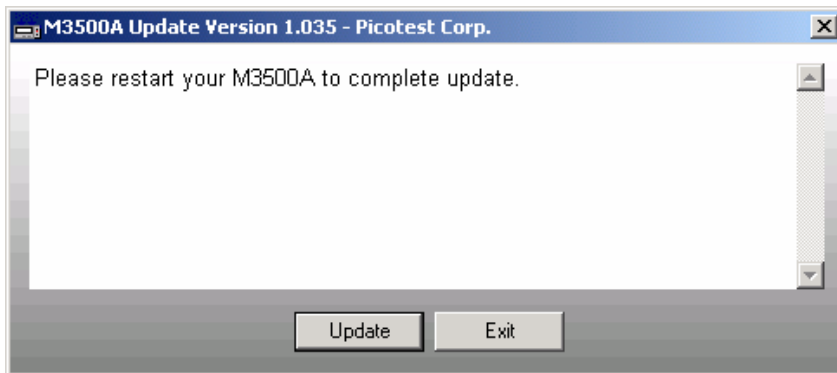
Step3. When you see the window shows up as below, please restart your bench-top M3500A. Please **ignore the “ERR” on the panel** after you restart M3500A. The “ERR” will disappear after you complete whole installation.



Step4. After you restart the M3500A, please click “**Update**” again to choose second file **DATA_X4_4.bin** for second installation.



Step5. You may exit the program and restart your M3500A again to complete the installation.



Step6. To confirm the upgrade is complete, you may do as following:

A. Press “DISPLAY-NEXT” to view the version.

The DSP Version should be 01.0H.

B. Press “MENU/SYSTEM/SYSTEM VER.”

The SYSTEM VER. should be 01.0H-01-04.

If the result is incorrect, please try the installation again.